



JG Underfloor Manifold Kits

Installation and Maintenance
Instructions

**Reliance Worldwide
Corporation (UK) Limited**

Horton Road
West Drayton
UB7 8JL
United Kingdom
Tel: +44 (0) 1895 449233

Technical help desk
Tel: +44 (0)1895 425 333

speedfit.co.uk



AN RWC BRAND
RWC

First isolate all but one of the heating circuits by turning off the relevant decorator's caps

Next flush out the open circuit with clean water until it runs freely from the bottom valve.

Isolate this circuit and open the next one.

Repeat this until all circuits have been filled.

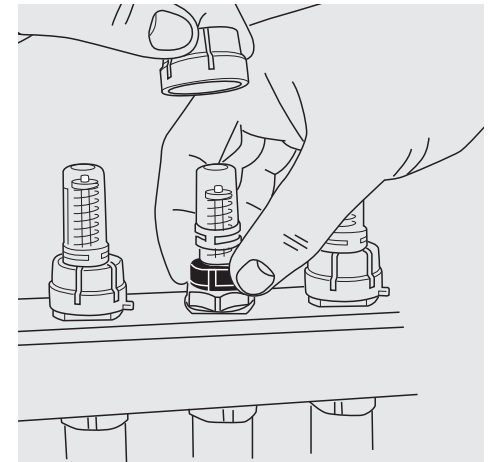
Isolate and pressure test the manifold at this stage.

Test at 2 bar for 10 minutes followed by 5 bar for 10 minutes

Introduce any inhibitor or antifreeze at this stage. When commissioning the system follow our normal guidelines www.speedfitufh.com - literature.

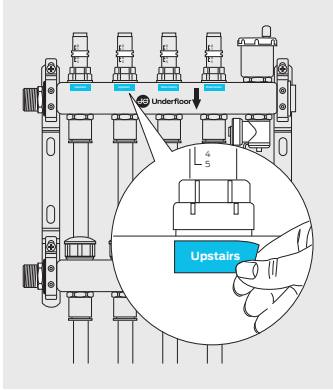
Flow rates should be set to correspond with the system design. This is achieved (with the pump running) by lifting the locking collars at the base of the flow indicators and rotating the indicator base until the desired flow is indicated, then refit the locking collars.

Please do not rotate the glass as this will completely remove the gauge, this is designed only to be removed for cleaning purposes, and when the flow has been isolated.

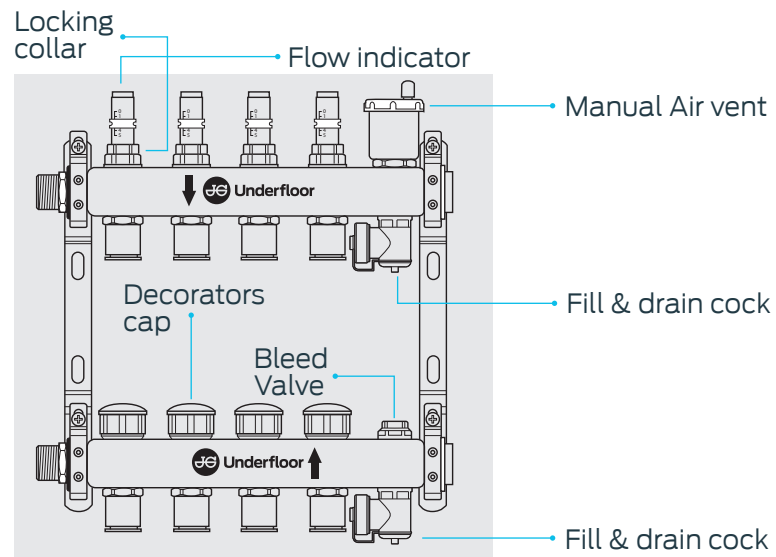


Each flow meter comes with an indicator sleeve, these can be positioned to correspond with the flow rate which has been set for each one.

As desired), to identify which zone each loop of pipe serves.



Section 6 - Commissioning



When initially filling the UFH heating system it is important to remove the air in the pipework.

In order to do this a hose should be connected to the upperfill valve and the bottom valve should be opened to allow the water to be flushed into a bucket or drain.

Contents

Materials & specifications

Dimensional information

Pack contents

General installation guidance

Commissioning

Section 1 - General Information

The JG Underfloor Manifold includes flow and return manifolds that come pre-assembled to installation brackets and supplied with pushfit connections, automatic air vent, filling / draining points, wall mounting's plus, screws, and identity labels for each zone.

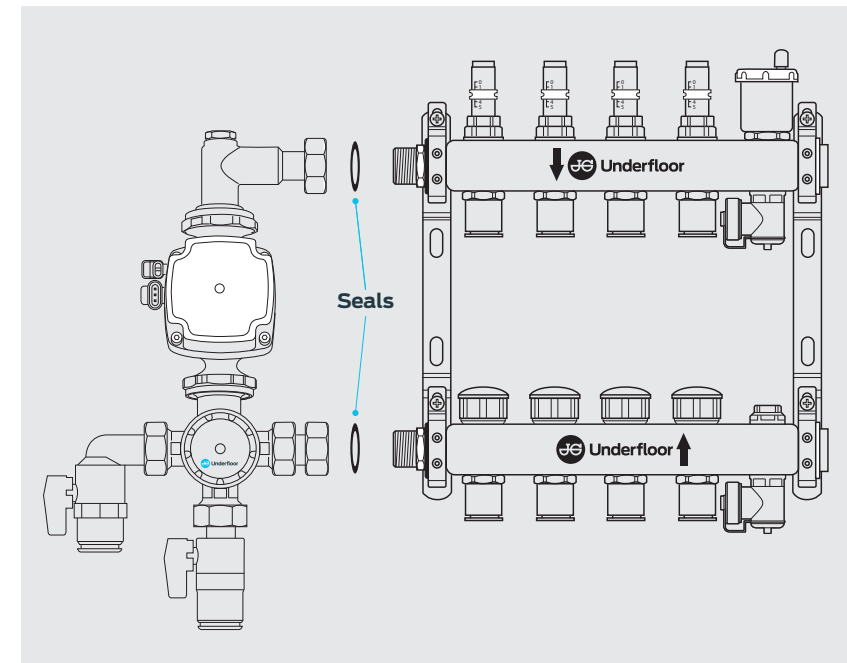
Maximum working pressure:	6 bar
Maximum working temperature:	82°C
Media:	Water with corrosion inhibitors present

Manifold body:	304 stainless steel
Drain valve/air vent:	Nickel plated brass
Internal seals:	NBR and EPDM
Bracket:	Zinc Plated Mild Steel
Pushfit fittings body:	Standard Brass

Connect onto the open ends of the flow and return manifolds. Ensure the threaded end with the O-Ring fitted is connected to the manifold.

The manifold is now ready to have the underfloor pipes and the UFHC temperature control unit attached, ensure the fibre washers are inserted to form a seal.

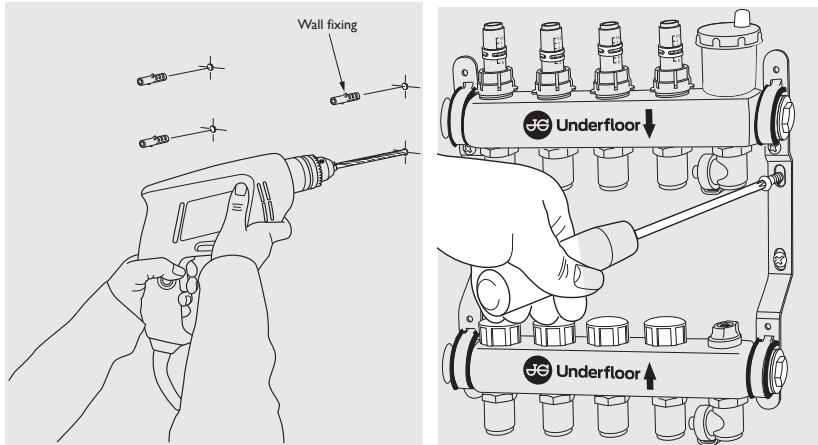
Ensure the tube is cut squarely and is not damaged. Always use Superseal pipe inserts when using Speedfit pipe.



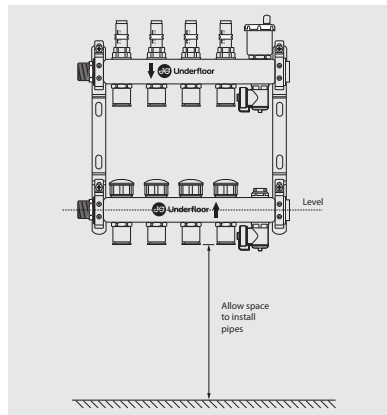
Section 5 - Installation guidance

Before installation the flow manifold bar needs to be twisted around so the flow gauges are on top with the connections below (as per pictures) to do this loosen the securing screws, twist the bar to correct orientation and re-tighten the screw. The manifolds are packed in this way to protect the flow gauges whilst in transit.

Use the screws and plugs provided to mount the pre-assembled flow and return manifold assembly to the wall. Please ensure that the screws and plugs provided are appropriate for your wall construction, if not alternative suitable fixings should be used.



Make sure that the manifold is level and that it is high enough so that the pipes can be installed easily.



Flow Meter

Flow rate R:

0-5 lpm

Connection:

Brass

O-Ring Seal:

NBR

Spring:

Stainless Steel

Cover Cap:

ABS

Regulator W:

Polycarbonate

Circuit Con

Stroke:

3mm

Connection:

Nickel plated brass

O Ring Seal:

EPDM

Washer:

EPDM

Spindle:

Stainless Steel

Spring:

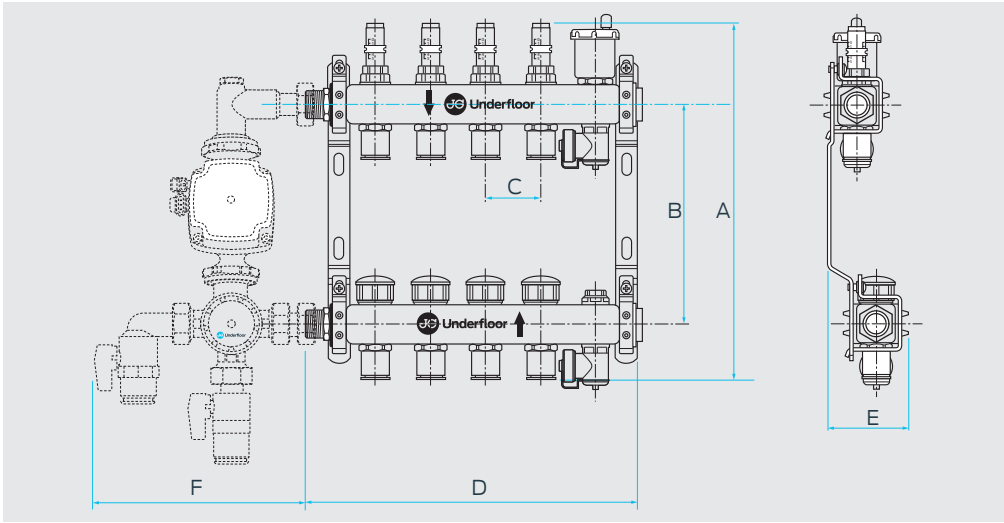
Stainless Steel

Cover Cap:

ABS



Section 3 - Dimensional Information



Circuits	A	B	C	D	E	F
2	340	210	50	208	94	200
3	340	210	50	258	94	200
4	340	210	50	308	94	200
5	340	210	50	358	94	200
6	340	210	50	408	94	200
7	340	210	50	458	94	200
8	340	210	50	508	94	200
9	340	210	50	558	94	200
10	340	210	50	608	94	200
11	340	210	50	658	94	200
12	340	210	50	708	94	200

All dimension are shown in mm unless otherwise stated

Section 4 - Pack Contents

Before commencing the installation please check that all of the manifold pack components are in the box.

The kit should include :

- One flow and one return manifold with JG pushfit fittings pre-installed on wall mounting brackets
- One sheet of identity stickers
- Wall plugs & screws
- Instruction booklet